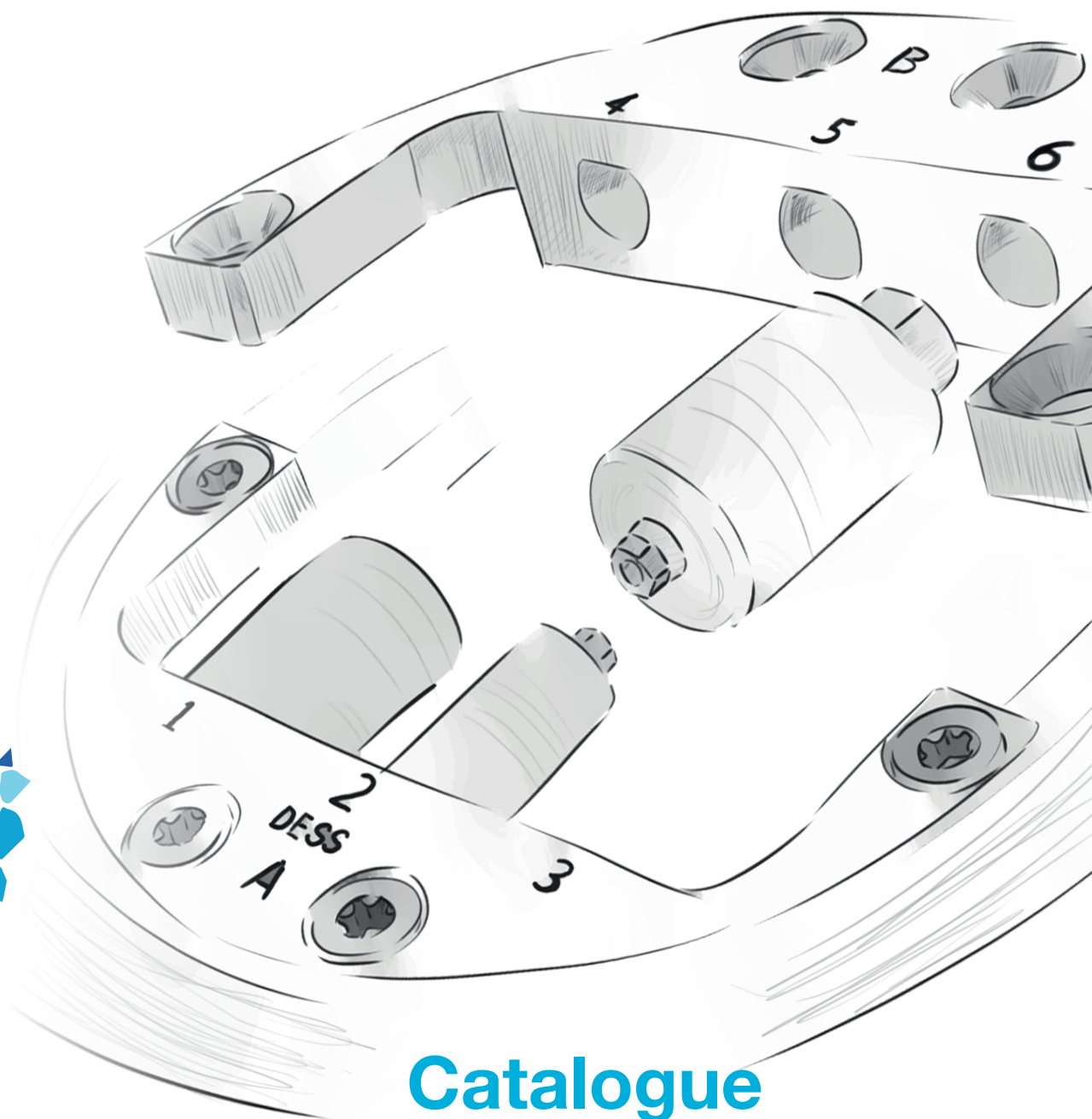




# DESS

> DENTAL SMART SOLUTIONS



**Catalogue**  
**PRE-MILLED 2023**

# PRE-MILLED

Over the last decade, we've seen a revolutionary transformation in the dental industry. New technology added to the rise of saas solutions, are setting the grounds for more customization in the abutments market.

At DESS® we pioneered launching our first range of Pre-milled blanks, back in 2012, but the market wasn't there yet.

In the recent years, however, both in-house milling machines and the CAD/CAM softwares have not only improved but also made the customization more affordable, this in conjunction with a new generation of professionals are helping modern dentistry to thrive and more certainly be at the foreground of the industry.

Now DESS® has become one of the leading manufacturers of premilled and a reference in the DiY dentistry.

DESS® offers a full assortment of Titanium grade V ELI and Cobalt Chrome pre-milled blanks available in 10mm & 14mm diameters, in the most popular implant connections of the market.

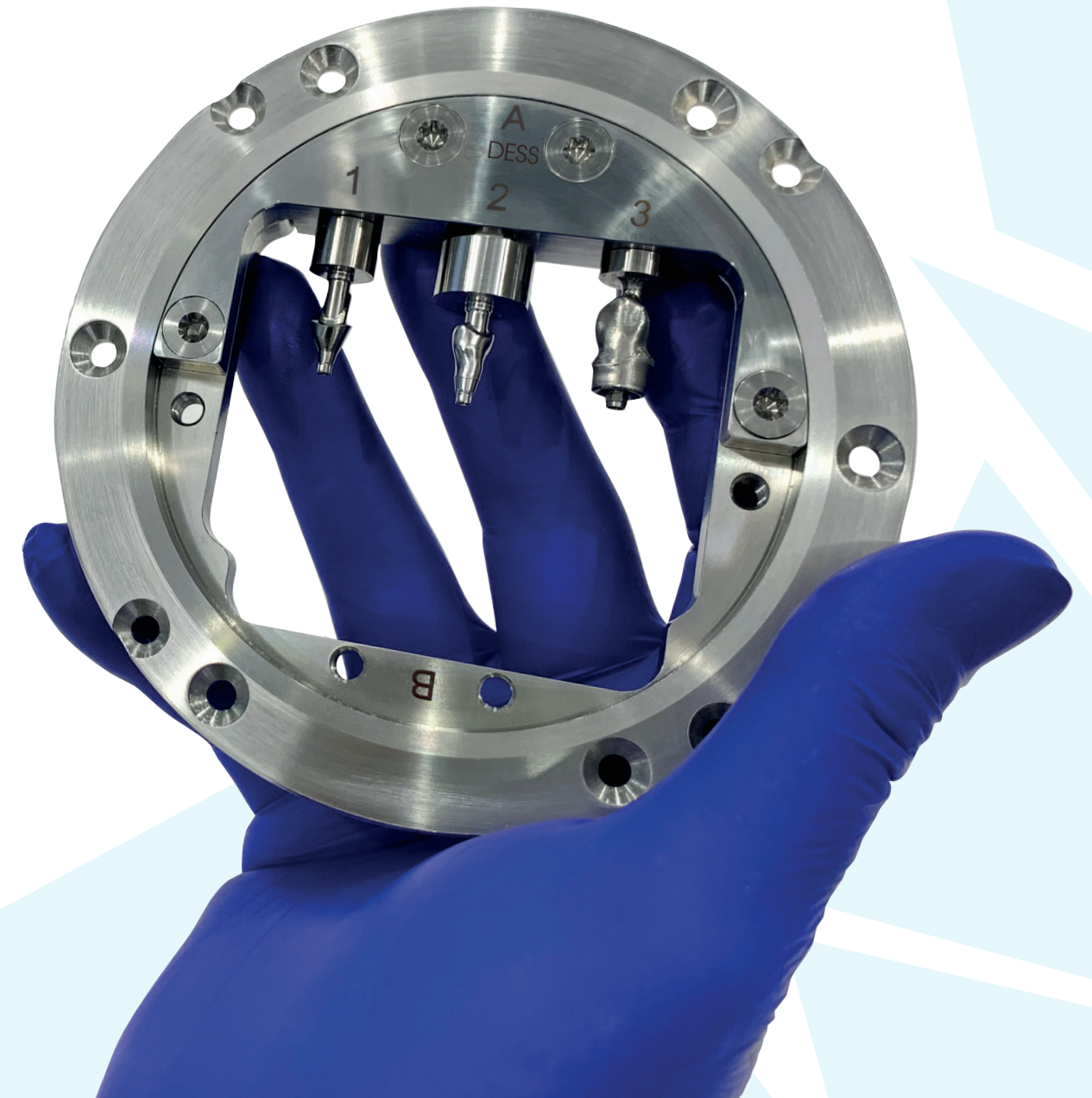
The blanks work together with the DESS® holder systems specially developed for Imes-Icore® VHF® machines, ZirkonZahn® wet mill, Yenadent® and also available a universal holder for any other machine that use standard 98mm discs and 3R rapid changers.



## The DESS holder system has several advantages to other solutions:

Quick "screw-on" system where the pre-milled blanks are attached to a subholder outside the machine and then placed in the holder that remains in the machine. This makes it easier, cleaner and faster when it comes to placing and removing blocks.

Also, due to the unique way of "pull down and lock" holding system with a screw that secures the pre-milled blank, assuring the maximum precision and stability during the milling process is achieved. Pre-milled socket positions and sub-holders are laser identified to better ensure what is where and optimise the milling process.





# OUR BLANKS

Only the finest Titanium Grade V ELI (extra low interstitial) or also called Grade 23, and the exclusive Micro Melt Cobalt-Chrome, are used to manufacture our Premilled Blanks.

A total millable length of 20 mm makes it one of the longest in the market.

Our Micro Melt Cobalt-Chrome alloy has no internal tension so however radical your design is, the final custom abutment will preserve the shape along the process resulting in lower probability of ceramic cracks.

The DESS® Cobalt-Chrome is also **Easier to mill** than others alloys in the market, which will preserve your tools.

Contact our support team to know the exact thermal expansion coefficient to assure the highest level of quality on your final work.

Minimal gingival transition height, just 0,3 mm to allow a maximum degree of design freedom.

“Pull down and lock” holding system. Developed by DESS® back in 2012, allows a strong and precise positioning of the pre-milled blank inside its socket.



## Available in:

- Titanium 10mm or 14mm
- Cobalt-Chrome 14mm

DESS® connection precision is guaranteed in all our Premilled Blanks.



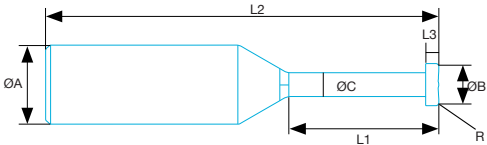
# FULL DIY CONTROL

The DESS® AURUM Milling tool will allow you to create screw retained bars, bridges or multiple with an angulated channel of up to 25° by using the AURUMBase® screw.

This solution is available for those compatibilities where the AURUMBase®, angulated screw channel solution is available

The AURUM Milling Tool replicates the AURUMBase® screw seat.

## The Tool



Reference	ØA	ØB	ØC	L1	L2	L3	R
MT3D16L5	3	1,6	0,95	5	51	0,5	0,1
MT4D16L5	4	1,6	0,95	5	51	0,5	0,1
MT6D16L5	6	1,6	0,95	5	51	0,5	0,1

## Integrated in the most popular systems



### DESS Blocks

Titanium Grade V ELI (extratief interstital)  
oder Micro Melt Kobalt-Chrom

Ø15mm x L 20mm  
Ø15mm x L 40mm

### Connections

- ACTIVE HEX  
FITS  
NOBELACTIVE® & NOBELREPLACE® CC
- TRI-LOBE  
FITS  
NOBELREPLACE SELECT™
- EXTERNAL HEX UNIVERSAL  
FITS  
NOBEL BRÄNEMARK®
- EXTERNAL HEX USA  
FITS  
3i OSSEOTITE®
- INTERNAL HEX "CLICK"  
FITS  
3i CERTAIN®
- OCTAGON  
FITS  
STRAUMANN® SOFT TISSUE LEVEL & synOcta®
- CONICAL BL  
FITS  
STRAUMANN® BONE LEVEL
- CONICAL BLX  
FITS  
STRAUMANN® BLX
- NEO GM  
FITS  
NEODENT® GRAND MORSE
- INTERNAL HEX USA  
FITS  
ZIMMER SCREW-VENT®
- CONIC EVO  
FITS  
ASTRA TECH IMPLANT SYSTEM™ EV
- INTERNAL HEX CONIC  
FITS  
ASTRA TECH OSSEOSPEED™
- INTERNAL HEX FD  
FITS  
DENTSPLY FRIADENT XIVE®
- CONIC OSS  
FITS  
OSSTEM® TS
- INTERNAL CAM  
FITS  
CAMLOG®
- INTERNAL CON  
FITS  
CONELOG®
- INTERNAL HEX BH  
FITS  
BIOHORIZONS® INTERNAL
- EXTERNAL HEX BH  
FITS  
BIOHORIZONS® EXTERNAL
- INTERNAL HEX MI  
FITS  
MIS® SEVEN
- CONIC ANYR  
FITS  
MEGAGEN AnyRidge®
- CONIC IC  
FITS  
MEDENTIS ICX®



# PREMILLED



NobelActive® NobelReplace® CC Active Hex		3.0	NP	RP	WP
		3.0	3.5	4.3/5.0	5.5
Ø 10mm	Ti	61.068	61.041	61.042	61.069
Ø 14mm	Ti		62.041	62.042	62.069
Ø 14mm	CoCr	71.068	71.041	71.042	71.069



NobelReplace Select™ Tri-Lobe		NP	RP	WP	6.0
		NP/3.5	RP/4.3	WP/5.0	6.0
Ø 10mm	Ti	61.004	61.005	61.006	61.097
Ø 14mm	Ti		62.005	62.006	62.097
Ø 14mm	CoCr	71.004	71.005	71.006	71.097



NobelBranemark® External Hex Universal		NP	RP	WP
		NP/3.5	RP/4.1	WP/5.1
Ø 10mm	Ti	61.001	61.002	61.003
Ø 14mm	CoCr	71.001	71.002	71.003



3i Osseotite® External Hex USA		NP	RP	WP
		3.4	4.1	5.0
Ø 10mm	Ti	61.011	61.012	61.013
Ø 14mm	CoCr	71.011	71.012	71.013



3i Certain® Internal Hex "CLICK"		NP	RP	WP
		3.4	4.1	5.0
Ø 10mm	Ti	61.014	61.015	61.016
Ø 14mm	Ti		62.015	62.016
Ø 14mm	CoCr	71.014	71.015	71.016



Straumann® Soft Tissue Level & synOcta® Octagon		NNC	RN	WN
		3.5	4.1/4.8	4.8/6.5
Ø 10mm	Ti	61.070	61.009	61.045
Ø 14mm	Ti		62.009	62.045
Ø 14mm	CoCr	71.070	71.009	71.045



Straumann® Bone Level Conical BL		NP	RP	NP/RP
		NC/3.3	RC/4.1-4.8	NC/RC
Ø 10mm	Ti	61.043	61.044	
Ø 14mm	Ti	62.043	62.044	
Ø 14mm	CoCr	71.043	71.044	



Straumann® BLX Conical BLX		RB	WB	RB/WB
		3.5	4.5	
Ø 10mm	Ti	61.062	61.062	61.062
Ø 14mm	Ti		62.063	
Ø 14mm	CoCr		71.063	





Neodent Grand Morse®  
NEO GM

		GM
Ø 10mm	Ti	61.035
Ø 14mm	Ti	62.035
Ø 14mm	CoCr	71.035



Zimmer Screw-Vent®  
Internal Hex USA

		NP	RP	WP
		3.5	4.5	5.7
Ø 10mm	Ti	61.017	61.018	61.019
Ø 14mm	Ti	62.017	62.018	62.019
Ø 14mm	CoCr	71.017	71.018	71.019



Astra Tech Implant System™ EV  
Conic EVO

		EV/3.0	EV/3.6	EV/4.2	EV/4.8	EV/5.4
		3.0	3.6	4.2	4.8	5.4
Ø 10mm	Ti	61.406	61.059	61.060	61.061	61.407
Ø 14mm	Ti		62.059	62.060	62.061	62.407
Ø 14mm	CoCr		71.059	71.060	71.061	71.407



Astra Tech Osseospeed™  
Internal Hex Conic

		NP	RP	WP
		3.0	3.5-4.0	4.5-5.0
Ø 10mm	Ti	61.023	61.024	61.025
Ø 14mm	Ti		62.024	62.025
Ø 14mm	CoCr		71.024	71.025



Dentsply friadent® XIVE®  
Internal Hex FD

		NP	RP	WP	5.5
		3.4	3.8	4.5	5.5
Ø 10mm	Ti	61.038	61.039	61.040	61.071
Ø 14mm	Ti		62.039	62.040	62.071
Ø 14mm	CoCr	71.038	71.039	71.040	71.071



Ankylos® C/X  
Internal ANK

Ø 10mm	Ti	61.250
Ø 14mm	CoCr	71.250



Osstem® TS  
Conic OSS

		Mini	STD
		Mini	Regular
Ø 10mm	Ti	61.072	61.073
Ø 14mm	Ti	62.072	62.073
Ø 14mm	CoCr	71.072	71.073



Camlog®  
Internal CAM

		3.3	3.8	4.3	5.0
		3.3	3.8	4.3	5.0
Ø 10mm	Ti	61.064	61.065	61.066	61.067
Ø 14mm	Ti		62.065	62.066	62.067
Ø 14mm	CoCr	71.064	71.065	71.066	71.067





**Conelog®**  
Internal CON

		NP		RP	WP
		3.3		3.8/4.3	5.0
Ø 10mm	Ti	61.074		61.075	61.076
Ø 14mm	Ti	62.074		62.075	62.076
Ø 14mm	CoCr	71.074		71.075	71.076



**Biohorizons®**  
Internal Hex BH

		3.0	NP	RP	WP
		3.0	3.5	4.5	5.7
Ø 10mm	Ti	61.099	61.087	61.088	61.089
Ø 14mm	Ti			62.088	62.089



**Biohorizons®**  
External Hex BH

		NP		RP	WP
		3.7		4.2	5.2
Ø 10mm	Ti	61.020		61.021	61.022
Ø 14mm	Ti	62.020		62.021	62.022
Ø 14mm	CoCr	71.020		71.021	71.022



**MIS® Seven**  
Internal Hex MI

		NP	SP	WP	Multi-unit
		3.3	3.75-4.2	5.0-6.0	4.8
Ø 10mm	Ti	61.056	61.095	61.096	
Ø 14mm	CoCr		71.095	71.096	



**MIS® C1**  
Conic MC

		NP	SP	WP	Multi-unit
					4.8
Ø 10mm	Ti	61.081	61.082	61.083	



**MIS® V3**  
Conic MV

		NP	SP	Multi-unit
				4.8
Ø 10mm	Ti	61.084	61.082	



**Megagen AnyRidge®**  
Conic ANYR

Ø 10mm	Ti			61.057
Ø 14mm	CoCr			71.057



**Anthogyr Axiom®**  
Conic Axio

Ø 10mm	Ti			61.077
--------	----	--	--	--------



**Medentis ICX®**  
CONIC IC

Ø 10mm	Ti			61.080
Ø 14mm	Ti			62.080
Ø 14mm	CoCr			71.080



**Dentium Superline™ & Implantium®**  
Conic DENT

		RP				
		3.6	3.8	4.0	4.5	5.0
Ø 10mm	Ti			61.090		
Ø 14mm	Ti			62.090		
Ø 14mm	CoCr			71.090		





Bego Semados®

Internal SEM		3.25/3.75	4.1	4.5	5.5
Ø 10mm	Ti	61.091	61.092	61.093	61.094
Ø 14mm	Ti				62.094
Ø 14mm	CoCr				71.094



Biotech Kontakt®

Conic Bio			NP	RP
Ø 10mm	Ti		61.078	
Ø 14mm	CoCr		71.078	



HLDSTD	Standart 98mm Disc Maschinen	Any milling machine with 98mm disc holder
--------	------------------------------	---



HLDIMES	For Imes-Icore® machines	Coritec 245i touch Coritec 250i touch Coritec 350i / Coritec 250i Loader Coritec 450i Coritec 550i Coritec 650i / Coritec 650i Loader
---------	--------------------------	--



HLDVHF	For VHF®	VHF® S1 VHF® S2 VHF® K5 VHF® S5
--------	----------	--



HLDVHFR5	For VHF®	VHF® R5
----------	----------	---------



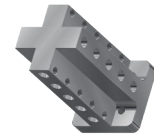
HLDYENA	For Yenadent®	D6 D15 D43N
---------	---------------	-------------------



HLDVHFN4	For VHF®	VHF® N4
----------	----------	---------



HLDVHFZ4	For VHF®	VHF® Z4
----------	----------	---------



HLD3R	For machines with support/changer 3R	D14P DC40 D43N
-------	--------------------------------------	----------------------

HOLDERS



# Quick Reference Guide

## Tool Selector

Brand	Model	Tool Diameter
3M-ESPE	LAVA CVC 240	3mm
AMANN GIRRBACH	CERAMILL MOTION 2 5X, MIKRO 5X, MIKRO 4X, MIKRO IC	3mm
CHARLY DENTAL	CD04-S, CD05-S	3mm
	CD50	3mm / 4mm / 6mm
DATRON	D5	3mm / 4mm / 6mm
	D1	4mm
DENTAL CONCEPT SYSTEMS	DC5, DC1	6mm
DENTASWISS	DS2000, DS2100	3mm
DMG MORI	ULTRASONIC 10, ULTRASONIC 20	3mm / 4mm / 6mm
DT DIGITAL	FINOCAM A5, FINOCAM CA, FI-NOCAM CA+	3mm
ERNST HINRICHS	HINRIMILL 5, HINRIMILL 5.8, HIN-RIMILL T5	3mm
EUROMAX MONACO	OPERA EASY 5, OPERA EXPERT 5, OPERA PRO-EXPERT 5	3mm
	OPERA PREMIUM	6mm
GOLDQUADRAT	QUATTRO MILL MAXI, QUATTRO MILL COMFORT 5X	3mm
IMES-ICORE	CORITEC ONE, CORITEC 140I, CORITEC 245I, CORITEC 250I	3mm
	CORITEC 350I, CORITEC 450I, CORITEC 650I, CORITEC 750I	6mm
JENSEN	PRECISO M305-X, PRECISO M205 MILL	3mm
MANI SCHÜTZ DENTAL	TIZIAN CUT 5 DRY, TIZIAN CUT ECO PLUS, TIZIAN CUT 5	3mm
	TIZIAN CUT5.2, TIZIAN CUT5.2 PLUS	6mm
MB MASCHINEN	COBRA MILL DESK 5, COBRA MILL 5M, COBRA MILL 48	3mm
	COBRA MILL 5A1	6mm
	COBRA MILL 58	3mm / 4mm / 6mm
R+K ORGANICAL CAD/CAM	ORGANICAL DESKTOP 7C, ORGANICAL DESKTOP 6	3mm
RÖDERS	RXD4, RXD5, RXD5C	3mm / 4mm / 6mm
ROLAND	DWX50, DWX51D	4mm
SHERA	ECO-MILL DRY	3mm
STRAUMANN	CARES M-SERIES	3mm
VHF	S1, S2, K5	3mm
YENADENT	D14, D15, D6, D43, DC40	4mm, 6mm
ZIRKONZAHN	M1 WET HEAVY METAL, M1 ABUTMENT, M4 WET HEAVY METAL, M5 HEAVY METAL, M6 WET HEAVY METAL	6mm

All DESS products are manufactured according to ISO 9001 and ISO 13485 with CE marking for all products Class IIb

All DESS® AURUMBase® screws and screwdrivers are based on the standard ISO 10664

3i® and 3i Certain®, Miniplant®, MicroMiniplant™ and Osseotite® are registered trademarks of 3i Implant Innovations, USA

ASTRA TECH™, OsseoSpeed™, ANKYLOS® C/X, XiVE®, FRIADENT®, ASTRATECH implant system™ EV and UniAbutment®

Cerec® are registered trademarks of DENTSPLY SIRONA Implants

BioHorizons® is a registered trademark of BioHorizons, INC.

Brånemark System®, NobelReplace® and Replace Select™, NobelActive™, NobelReplace® CC, NobelSpeedy™ and Multi-unit® are registered trademarks of Nobel Biocare AB,

Neodent®, Grand Morse® , Straumann® and synOcta® are registered trademarks of Straumann Holding AG, Switzerland

MIS® is a registered trademark of MIS Implant Technologies Ltd.

Zimmer Screw-Vent® and SwissPlus® are registered trademarks of Zimmer Dental INC, USA

Dyna® is a registered trademark of Dyna Dental Engineering BV

Locator® is a registered trademark of ZEST IP Holdings

Camlog® and Conelog® are registered trademarks of CAMLOG Biotechnologies AG

Megagen® is a registered trademark of MEGAGEN IMPLANT CO. LTD

TORX® is a trademark of ACUMENT INTELLECTUAL PROPERTIES, LLC

Bego Semados® is a registered trademark of BEGO GmbH & Co. KG

Anthogyr® is a registered trademark of Anthogyr SAS

Medentis ICX® is a registered trademark of medentis medical GmbH

Osstem®, Hiossen® is a registered trademark of OSSTEM IMPLANT CO. LTD

Dentium® is a trademark of Dentium Co. Ltd.

GOBALD® is a trademark of Global D SASU.

Biotech Kontakt® is a trademark Biotech Dental SAS.

BTI® is a trademark BTI Biotechnology Institute.

PHIBO® is a trademark PHIBO Dental Solutions S.L.

DESS products can be used only by licensed dentists, physicians and labs.

Please refer ever to the instructions of use available on the website

**www.dessdental.com**

or supplied with the product.

Some products may not be available in your country. Some of the products are cleared for US and Canada.

Please contact your local distributor for more details.











[www.dessdental.com](http://www.dessdental.com)